



LIFE
BEYOND
THE
ORDINARY

Vertex
PREMIO
Hydernagar, Kukatpally

AN ADDRESS OF PREMIUM LIVING
AT HYDERNAGAR

 **Vertex**
LIVING MODERNISED
ANDHRA PRADESH | TELANGANA



ONE MORE LANDMARK BY VERTEX



WELCOME TO THE PREMIO WAY OF LIFE!

Ordinary is a word of past. At Vertex, it's always premium. Right from the selection of location, to the final delivery of your home, Vertex adds an immense value to it. Functional spaces, large green outdoors, lavish amenities at the clubhouse, propels life beyond ordinary. We redefine it again at Premio, the new definition of premium lifestyle.

Vertex
PREMIO
Hydernagar, Kukatpally

CENTRAL LOCATION



HI-END LIFESTYLE



VAST GREEN SPACES





PREMIUM ON SPACE & AESTHETICS

Vertex
PREMIO
Hydernagar, Kukatpally

SUJANA FORUM MALL

JNTU

JNTU METRO STATION

NATIONAL HIGHWAY NO-65

NOW
Vertex
PREMIO
LAUNCHING SOON



Vertex
LIVING MODERNISED
PRIDE
2001

Vertex
LIVING MODERNISED
PARADISE
2000

Vertex
LIVING MODERNISED
PLEASANT
2006

Vertex
LIVING MODERNISED
PRESTIGE
2004

Vertex
LIVING MODERNISED
SADGURU
2008

Vertex
LIVING MODERNISED
PRIVILEGE
2004


Vertex
LIVING MODERNISED
PRIME
2012

NIZAMPET ROAD

Decades ago, when Kukatpally was transforming into a major city center, Vertex played a pioneering role in defining Hydernagar with a string of upscale apartment buildings and villas. Vertex has built lifestyle environments bringing with them the latest designs, integrated development and open green spaces for the communities and has changed the entire scape of Hydernagar road.

PREMIUM ON LOCATION-HYDERNAGAR

COMPLETED PROJECTS ON HYDERNAGAR ROAD **12**

2 MINSTO JNTU METRO STATION | 20 MINSTO HITEC CITY 



IT ALL STARTS WITH RIGHT PLANNING!

Vertex Premio is a well-planned mega environment. Connect with the best things of life at Vertex Premio. Abutting the proposed 100 ft wide road, the 6-block lifestyle environment offers a well-connected living to 223 upscale families. The two and three BHK apartments showcase the finest of spatial planning, the finesse of top brands and a seamless blend of indoors and outdoors.

Vertex
PREMIO
Hydernagar, Kukatpally

3.45 ACRE PREMISES | 223 PREMIUM APARTMENTS





KEY POINTS

GHMC-Approved project

3.45 Acre premises

223 Premium Apartments

2 & 3 BHK Apartments

6 Blocks, Each 6 Floors

Visitors' Lounge for each block

No common walls

100% Vastu compliant

Exclusive Clubhouse in 12,360 Sft

Central Party Lawn

Majestic entrance gate

Controlled Entry & Exit

Cellar parking

Children play area

Designer landscaping

Project on Proposed 100ft wide road

Vertex
PREMIO
 Hydernagar, Kukatpally

The grand entrance gate gives you a glimpse of what lies ahead in the premises. The huge open spaces are designed for greenery and play areas. Community bonding for senior citizens, recreation amenities for adults and plenty of outdoor spaces for children will thrill the residents. Life comes abundantly and vibrantly alive at Vertex Premio.



RIGHT FROM OUTDOORS TO INDOORS!

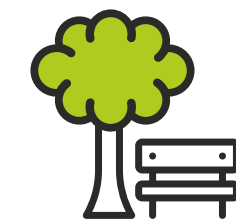
Vertex Premio offers indoor and outdoor spaces that complement each other. If you feel interiors are impressive, think again! Elegantly done outdoors invite families to spend quality time together. Parks, play areas, seating niches draw residents into the lap of nature. Give children a secure environment to blossom in freedom. The outdoors are meticulously designed to create a great atmosphere for stronger family bonding.

OUTDOORS

*Wide driveways
Avenue plantation
Street lighting
Waiting plaza
Water feature*

Vertex
PREMIO
Hydernagar, Kukatpally

COURTYARDS | PLAY AREAS





AMENITIES

- Jogging track*
- Party lawn*
- Performing stage*
- Cricket Practice net*
- Senior citizens court*
- Amphi-theatre*
- Badminton court*
- Half-Basketball court*
- Scribble wall*
- Yoga deck*
- Outdoor Fitness Station*

Vertex
PREMIO
Hydernagar, Kukatpally

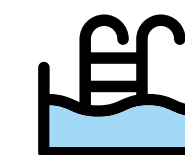


RECREATION IS A WAY OF LIFE!

Indulge in plenty of options the clubhouse offers to its community. The environment lets you be in peak performance and recharge in an exclusive clubhouse. Bond with the community in fun activities at "Premio Club". Keep fit with a regular workout in the fully loaded gym, celebrate frequently held parties in the multi-purpose hall and play indoor and outdoor games to energise yourself. Keep the world outside the gates and enjoy every moment of life.

Vertex
PREMIO
CLUB

SEMI-COVERED SWIMMING POOL | GYM





SWIMMING POOL



AMENITIES

- Semi-Covered Swimming pool*
- Kids' pool*
- Multi-purpose hall*
- Gymnasium*
- Yoga / Meditation Hall*
- Indoor Games*
- Ladies Recreation Centre*
- Library*
- TV Lounge*
- Guest Rooms*

Vertex
PREMIO
Hydernagar, Kukatpally





EXPLORE PREMIUM LIVING!

Vertex
PREMIO
 Hydernagar, Kukatpally

LEGEND

- 01. Entry / Exit
- 02&03. Jogging Track
- 04. Waiting Plaza
- 05. Party Lawn
- 06. Performing Stage
- 07. Cricket Practice Pitch
- 08. Children's Play Area
- 09. Swimming Pool
- 10. Senior Citizen Place
- 11. Amphitheatre
- 12. Badminton Court
- 13. Basketball Court
- 14. Scribble Wall
- 15. Yoga Deck
- 16. Outdoor Fitness Station
- 17. Water Feature



SITE LAYOUT

Project on Proposed 100 Ft Wide Road

BLOCK - A

TYPICAL FLOOR PLAN



BLOCK - B

TYPICAL FLOOR PLAN



SPECIFICATIONS

	FRAMED STRUCTURE SUPER STRUCTURE PLASTERING	: RCC framed structure to withstand wind and seismic loads : 8” thick solid block work for external walls & 4” thick solid block work for internal walls : Double coats of cement mortar plaster for internal & external walls
	DOORS & WINDOWS	
	Main Door	: Factory made (Prehung) engineered doors with imported wood frame and flush shutter with Teak veneer, melamine polish and designer hardware of reputed make.
	Internal Doors	: Factory made (Prehung) engineered doors with imported wood frame and flush shutter with Teak veneer, melamine polish and hardware of reputed make.
	Toilet Doors	: Factory made (Prehung) engineered doors with imported wood frame and flush shutter with Teak veneer and melamine polish for front face and aqua coated finish for rear face with hardware of reputed make.
	Balcony Doors	: Factory made (Prehung) engineered doors with imported wood frame and flush shutter with Teak veneer and melamine polish for front face and wood laminated finish for rear face with hardware of reputed make.
	French Doors	: Aluminium / UPVC frames and shutters with glass panels with hardware of reputed make.
	Windows	: Aluminium / UPVC frames and shutters with tinted glass with hardware of reputed make.
	PAINTING	
	Internal Walls	: Premium emulsion paint with putty finish of reputed make for walls and ceiling.
	External Walls	: Textured finish with 2 coats of exterior emulsion paint of reputed make for walls & enamel paint for MS grills & railing
	FLOORING	
	All Rooms	: 600mm x 600mm vitrified tiles with 4” skirting
	Toilets, Balcony & Utility	: Anti-skid ceramic tiles.
	Corridor	: Vitrified / Ceramic tiles
	Staircase	: Tandur stone for steps & mid-landing
	CLADDING/DADOING	: Dadoing up to 7’ height with designer ceramic tiles in all toilets Ceramic tiles up to 2’ height above kitchen platform Ceramic tiles up to 3’ height in utility / wash area Vitrified / Granite tile cladding for lift entrance

	KITCHEN	: Granite platform Stainless steel sink with drain board
	TOILETS	: EWC of reputed make with concealed flush valve Hot and Cold water mixer with shower of reputed make Provision for geyser points in all toilets All CP fittings of reputed make
	ELECTRICAL WORKS	: Concealed copper wiring in conduits for lights, fans, TV, computers and power points wherever necessary. Power points for air conditioners in all bedrooms and other identified areas Power points for refrigerators and cooking appliances in kitchen Power points for geysers in all bathrooms All electrical fittings of reputed make MCB of distribution board of reputed make 3 Phase supply for each unit and individual meter boards
	COMMUNICATION, CABLETV & INTERNET	: Telephone points in living room and master bedroom Provision for Cable TV connection in master bedroom and living room Provision for Internet connection in all flats Intercom facility to all flats connecting Security
	POWER BACKUP	: Partial power backup through Generator
	LIFTS	: Auto shutter lifts for each block- Johnsons/ Kone or equivalent make
	OTHER AMENITIES	: Treated domestic water supply Separate Municipal water supply to kitchen Sewage Treatment Plant with treated sewage water supply through Hydro-pneumatic system for toilet flush and landscaping Piped Gas supply for each flat Fire safety protection as per norms.

CONNECTIVITY IS A WAY OF LIFE!

Just a few minutes from NH 9, Hydernagar has the hallmarks of an elite destination. Properly laid colony roads, Metro rail, connectivity to the shopping in Kukatpally and IT offices in Madhapur makes it an eminently desirable address. Vertex Premio makes Hydernagar richer by its arrival. Popular schools, shopping malls, fine dining and recreation around will make Hydernagar the centre of the world.

DISTANCES FROM SITE

METRO STATION

JNTU - 0.8 Kms

SCHOOLS

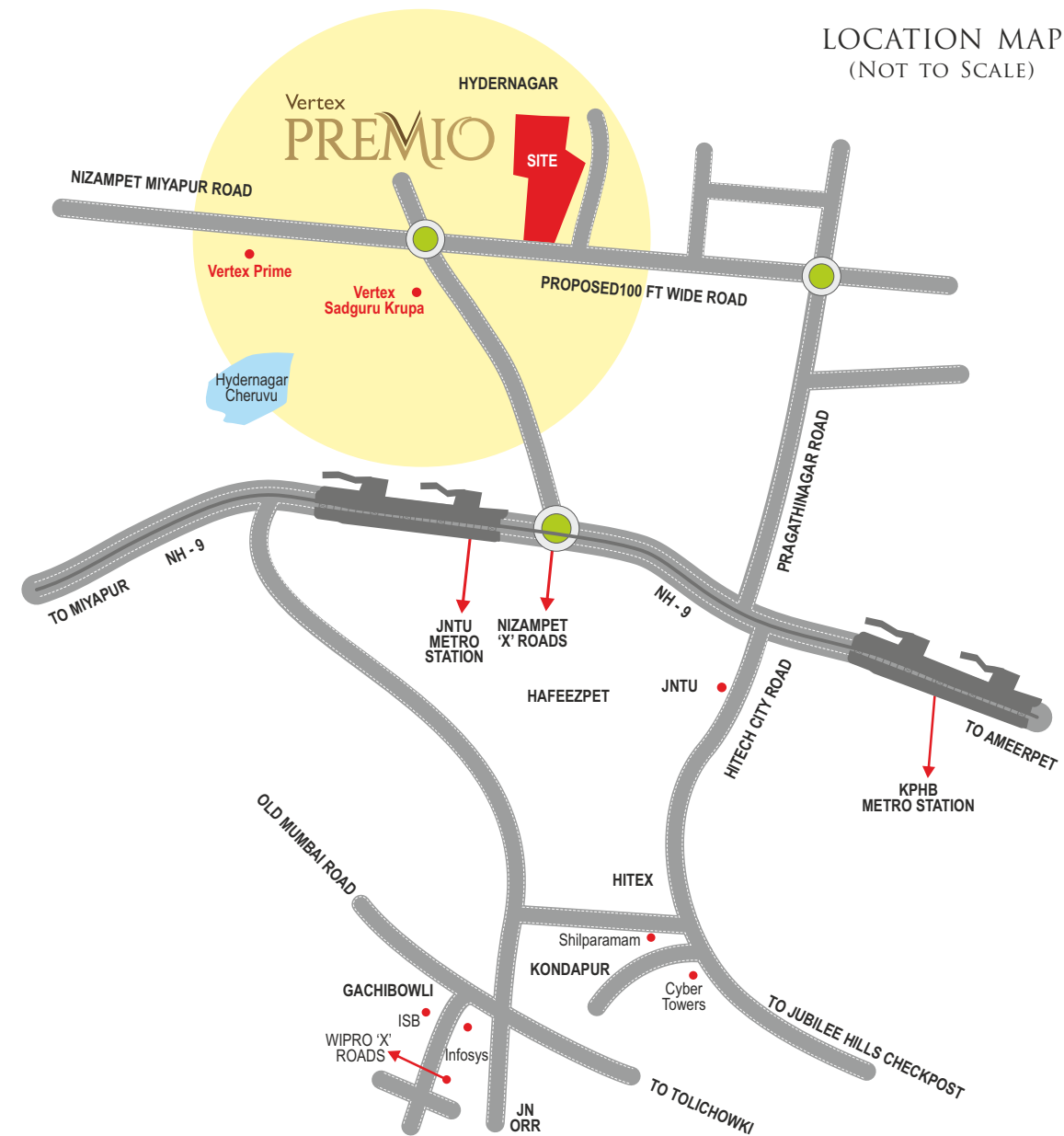
Narayana Concept School - 1 Km
 Sanghamitra School - 1.5 Kms
 JNTU - 2 Kms
 Sri Chaitanya Jr College - 3 Kms
 Vikas Concept School - 6 Kms
 Oakridge International School - 10 Kms

HOSPITALS

Holistic Hospitals - 1 Km
 Landmark Hospital - 2 Kms
 Pulse Heart Center - 2.5 Kms
 Rainbow Children's Hospital - 2.5 Kms

SHOPPING MALLS

Decathlon - 2 Kms
 Manjeera Mall - 3 Kms
 Forum Sujana Mall - 4 Kms



REPUTATION BUILT ON PERFORMANCE



ONGOING PROJECTS



VILLA PROJECT



LAYOUT PROJECTS



COMPLETED PROJECTS AT HYDERABAD

Nagarjuna Homes	Nizampet Road
Nagarjuna Homes	Nizampet Road
Nagarjuna Residency	Kalyan Nagar
Nagarjuna Enclave	Phase-II Babuguda
Nagarjuna Residency	Rajiv Nagar
Nagarjuna Lakeview	Kavuri Hills
Vertex Paradise	Nizampet Road
Vertex Cute	Nizampet Road
Vertex Classic	S.R.Nagar
Vertex Pearl	S.R.Nagar
Vertex Plaza	S.R.Nagar
Vertex Pride	Nizampet Road
Vertex Privilege	Nizampet Road
Vertex Prestige	Nizampet Road
Vertex Pleasant	Nizampet Road
Vertex Paradigm	Shankar Mutt
Vertex Sadguru Krupa Phase-I	Nizampet Road
Vertex Lakeview	Nizampet Road
Vertex Corporate office	Madhapur
Vertex Sadguru Krupa Phase-II	Nizampet Road
Vertex Prime	Nizampet Road

COMPLETED PROJECTS AT VIJAYAWADA

Vertex Surya Meadows	Gudavalli
Vertex Gardenia	Gannavaram
Vertex Green Reserve	Eluru Road
Vertex Capital Vista	Khaza

24 YEARS OF EXCELLENCE



ANDHRA PRADESH | TELANGANA

CORPORATE OFFICE

VERTEX CORPORATE

4th Floor, Plot No. 8 & 9, Jubilee Enclave

Opp. HITEX Entrance, Madhapur, Hyderabad-500 081

PH: 040-4849-99-99

www.vertexhomes.com

ARCHITECTS



Genesis Planners Pvt. Ltd.

P-559, Road #92, Phase-III, Jubilee Hills

Hyderabad, Telangana 500 033

Phone: 040 6697 7777

FOR ENQUIRIES, PLEASE CALL: 7306 300 300

Note: This brochure is purely a conceptual presentation and not a legal offering. The promoters reserve the right to make changes in elevation, specifications and plans as deemed fit.